



# Test Report

Report No. A2240413041132

Page 1 of 10

**Company Name** CHANGSHU LINZHI ELECTRONICS CO.,LTD  
**shown on Report**  
**Address** HIGH TECH PARK,JIANGSU CHANGSHU ECONOMIC DEVEIOPMENT  
ZONE,CHINA

**The following sample(s) and sample information was/were submitted and identified by/on the behalf of the applicant**

**Sample Name** NTC Thermsitor(MF58 Series)  
**Sample Received Date** Jul. 15, 2024  
**Testing Period** Jul. 15, 2024 to Jul. 31, 2024

**Test Requested** As specified by client, to test Lead (Pb), Cadmium (Cd), Mercury (Hg), Hexavalent Chromium (Cr(VI)), Polybrominated Biphenyls (PBBs), Polybrominated Diphenyl Ethers (PBDEs), Phthalates (DBP, BBP, DEHP, DIBP) in the submitted sample(s).

**Test Method/Test Result(s)** Please refer to the following page(s).



Approved by

*Hill Zheng*

Date

Jul. 31, 2024

Hill Zheng  
Technical Manager

No. R677501703

Centre Testing International Group Co.,Ltd.

CTI Building, Xing Dong Community, Xin'an Sub-district, Bao'an District, Shenzhen City, Guangdong Province, P.R. China

Test Report

Report No.     A2240413041132 Page 2 of 10

\*\*\*\*\*

Conclusion

Tested Sample	According to standard/directive	Result
Submitted Sample	RoHS Directive 2011/65/EU with amendment (EU) 2015/863	PASS

\*\*\*\*\*

PASS means that the results shown on the report comply with the limits set by RoHS Directive 2011/65/EU with amendment (EU) 2015/863.

Test Report

Report No. A2240413041132 Page 3 of 10

Test Method

Tested Item(s)	Test Method	Measured Equipment(s)
Lead (Pb)	IEC 62321-5:2013	ICP-OES
Cadmium (Cd)	IEC 62321-5:2013	ICP-OES
Mercury (Hg)	IEC 62321-4:2013+AMD1:2017 CSV	ICP-OES
Hexavalent Chromium (Cr(VI))	IEC 62321-7-1:2015	UV-Vis
	IEC 62321-7-2:2017 and/or determination of Total Chromium by IEC 62321-5:2013	UV-Vis/ICP-OES
Polybrominated Biphenyls (PBBs)	IEC 62321-6:2015	GC-MS
Polybrominated Diphenyl Ethers (PBDEs)	IEC 62321-6:2015	GC-MS
Phthalates (DBP, BBP, DEHP, DIBP)	IEC 62321-8:2017	GC-MS

## Test Report

Report No. A2240413041132

Page 4 of 10

## Test Result(s)

Tested Item(s)	Result		MDL	Limit
	1	2		
Lead (Pb)	323891 mg/kg <sup>#1</sup>	N.D.	10 mg/kg	1000 mg/kg
Cadmium (Cd)	N.D.	N.D.	10 mg/kg	100 mg/kg
Mercury (Hg)	N.D.	N.D.	10 mg/kg	1000 mg/kg
Hexavalent Chromium (Cr(VI))	--	N.D. ▼	0.10 µg/cm <sup>2</sup> (LOQ)	1000 mg/kg
	N.D.	--	20 mg/kg	1000 mg/kg

Tested Item(s)	Result	MDL	Limit
	1		
Polybrominated Biphenyls (PBBs)			
Monobromobiphenyl	N.D.	100 mg/kg	1000 mg/kg
Dibromobiphenyl	N.D.	100 mg/kg	
Tribromobiphenyl	N.D.	100 mg/kg	
Tetrabromobiphenyl	N.D.	100 mg/kg	
Pentabromobiphenyl	N.D.	100 mg/kg	
Hexabromobiphenyl	N.D.	100 mg/kg	
Heptabromobiphenyl	N.D.	100 mg/kg	
Octabromobiphenyl	N.D.	100 mg/kg	
Nonabromobiphenyl	N.D.	100 mg/kg	
Decabromobiphenyl	N.D.	100 mg/kg	

Tested Item(s)	Result	MDL	Limit
	2		
Polybrominated Biphenyls (PBBs) #			
Monobromobiphenyl	N.D.	100 mg/kg	1000 mg/kg
Dibromobiphenyl	N.D.	100 mg/kg	
Tribromobiphenyl	N.D.	100 mg/kg	
Tetrabromobiphenyl	N.D.	100 mg/kg	
Pentabromobiphenyl	N.D.	100 mg/kg	
Hexabromobiphenyl	N.D.	100 mg/kg	
Heptabromobiphenyl	N.D.	100 mg/kg	
Octabromobiphenyl	N.D.	100 mg/kg	
Nonabromobiphenyl	N.D.	100 mg/kg	
Decabromobiphenyl	N.D.	100 mg/kg	

## Test Report

Report No. A2240413041132

Page 5 of 10

Tested Item(s)	Result	MDL	Limit
	1		
Polybrominated Diphenyl Ethers (PBDEs)			
Monobromodiphenyl ether	N.D.	100 mg/kg	1000 mg/kg
Dibromodiphenyl ether	N.D.	100 mg/kg	
Tribromodiphenyl ether	N.D.	100 mg/kg	
Tetrabromodiphenyl ether	N.D.	100 mg/kg	
Pentabromodiphenyl ether	N.D.	100 mg/kg	
Hexabromodiphenyl ether	N.D.	100 mg/kg	
Heptabromodiphenyl ether	N.D.	100 mg/kg	
Octabromodiphenyl ether	N.D.	100 mg/kg	
Nonabromodiphenyl ether	N.D.	100 mg/kg	
Decabromodiphenyl ether	N.D.	100 mg/kg	

Tested Item(s)	Result	MDL	Limit
	2		
Polybrominated Diphenyl Ethers (PBDEs) #			
Monobromodiphenyl ether	N.D.	100 mg/kg	1000 mg/kg
Dibromodiphenyl ether	N.D.	100 mg/kg	
Tribromodiphenyl ether	N.D.	100 mg/kg	
Tetrabromodiphenyl ether	N.D.	100 mg/kg	
Pentabromodiphenyl ether	N.D.	100 mg/kg	
Hexabromodiphenyl ether	N.D.	100 mg/kg	
Heptabromodiphenyl ether	N.D.	100 mg/kg	
Octabromodiphenyl ether	N.D.	100 mg/kg	
Nonabromodiphenyl ether	N.D.	100 mg/kg	
Decabromodiphenyl ether	N.D.	100 mg/kg	

# Test Report

Report No. A2240413041132

Page 6 of 10

Tested Item(s)	Result	MDL	Limit
	1		
Phthalates (DBP, BBP, DEHP, DIBP)			
Dibutyl phthalate (DBP) CAS#:84-74-2	N.D.	50 mg/kg	1000 mg/kg
Butyl benzyl phthalate (BBP) CAS#:85-68-7	N.D.	50 mg/kg	1000 mg/kg
Di-(2-ethylhexyl) phthalate (DEHP) CAS#:117-81-7	N.D.	50 mg/kg	1000 mg/kg
Diisobutyl phthalate (DIBP) CAS#:84-69-5	N.D.	50 mg/kg	1000 mg/kg

Tested Item(s)	Result	MDL	Limit
	2		
Phthalates (DBP, BBP, DEHP, DIBP) #			
Dibutyl phthalate (DBP) CAS#:84-74-2	N.D.	50 mg/kg	1000 mg/kg
Butyl benzyl phthalate (BBP) CAS#:85-68-7	N.D.	50 mg/kg	1000 mg/kg
Di-(2-ethylhexyl) phthalate (DEHP) CAS#:117-81-7	N.D.	50 mg/kg	1000 mg/kg
Diisobutyl phthalate (DIBP) CAS#:84-69-5	N.D.	50 mg/kg	1000 mg/kg

## Sample/Part Description

No.	CTI Sample ID	Description
1	1	Red body(Tested as a whole) #2
2	2	Silvery metal pin

# Test Report

Report No. A2240413041132

Page 7 of 10

**Remark:** The sample(s) had been dissolved totally tested for Lead, Cadmium, Mercury.

-<sup>#2</sup>The sample(s) was tested as a whole, because it's impossible to disassemble or separate it by current equipment and technology. The result(s) shown on this report may be different from the content of any homogeneous material.

-MDL = Method Detection Limit

-N.D. = Not Detected (<MDL or LOQ)

-mg/kg = ppm = parts per million

-1000 mg/kg = 0.1%

-LOQ = Limit of Quantification, The LOQ of Hexavalent chromium is 0.10 µg/cm<sup>2</sup>

-▼The sample is negative for Cr(VI) – The Cr(VI) concentration is below 0.10 µg/cm<sup>2</sup>. The coating is considered a non-Cr(VI) based coating. Information on storage conditions and production date of the tested sample is unavailable and thus Cr(VI) results represent status of the sample at the time of testing.

-<sup>#1</sup>According to the client's statement, the material of the sample(s) fall into exemption items 7(a) according to EU Directive 2011/65/EU: Lead in high melting temperature type solders (i.e. lead-based alloys containing 85 % by weight or more lead)

**Note:** -“#” indicates the item(s)/method(s) is (are) not in CNAS accreditation scope.

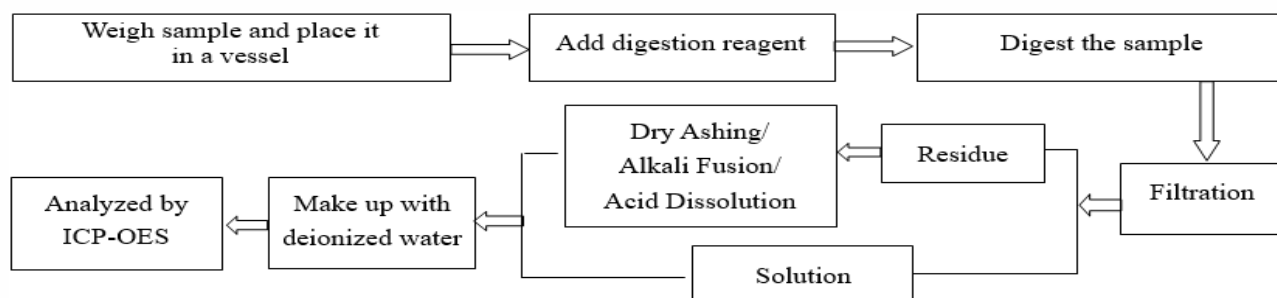
# Test Report

Report No. A2240413041132

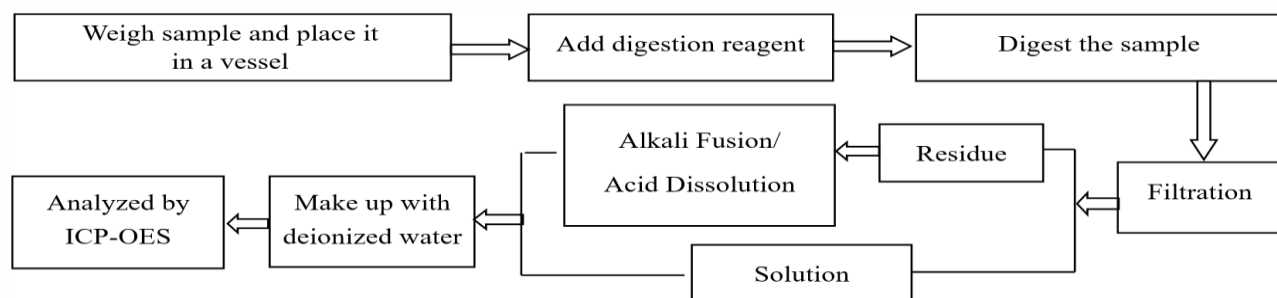
Page 8 of 10

## Test Process

### 1. Lead (Pb), Cadmium (Cd), Chromium(Cr)

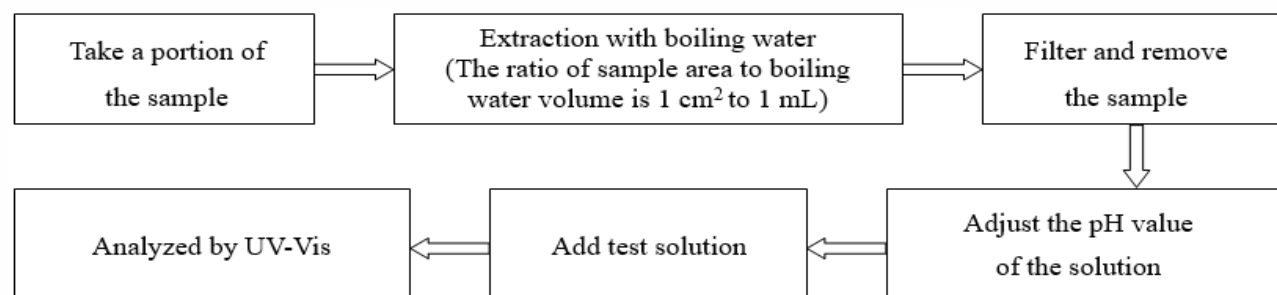


### 2. Mercury (Hg)

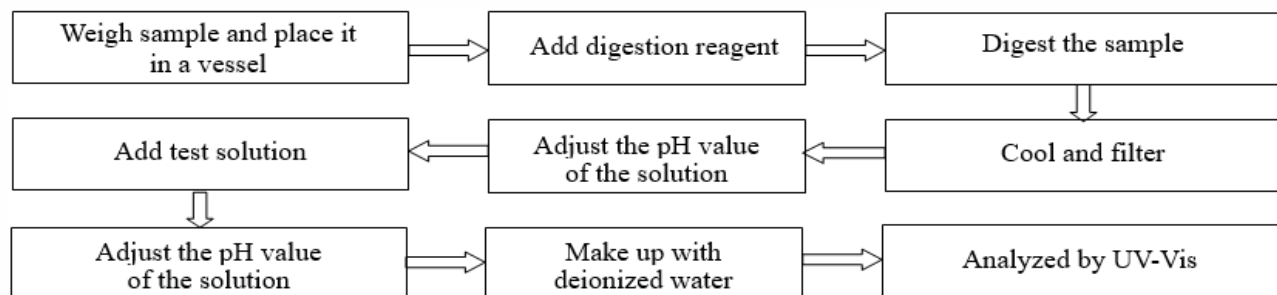


### 3. Hexavalent Chromium (Cr(VI))

#### (1) IEC 62321-7-1:2015



#### (2) IEC 62321-7-2:2017



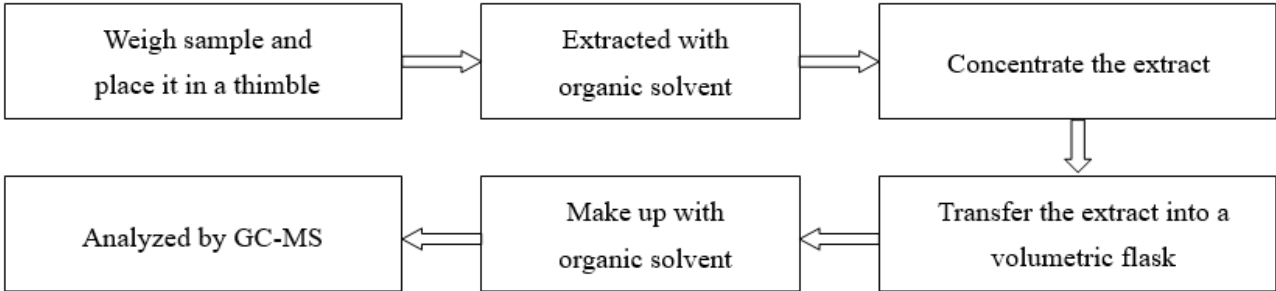


# Test Report

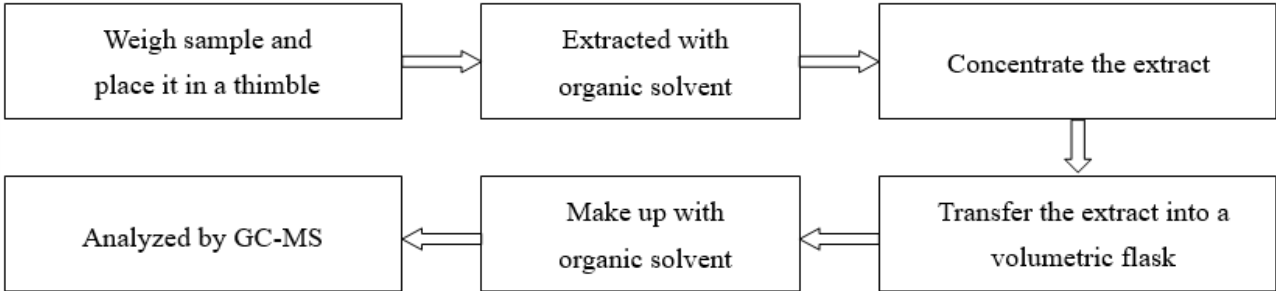
Report No. A2240413041132

Page 9 of 10

4. Polybrominated Biphenyls (PBBs), Polybrominated Diphenyl Ethers (PBDEs)



5. Phthalates (DBP, BBP, DEHP, DIBP)



# Test Report

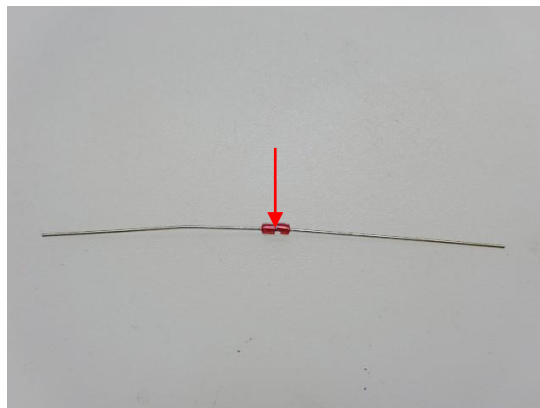
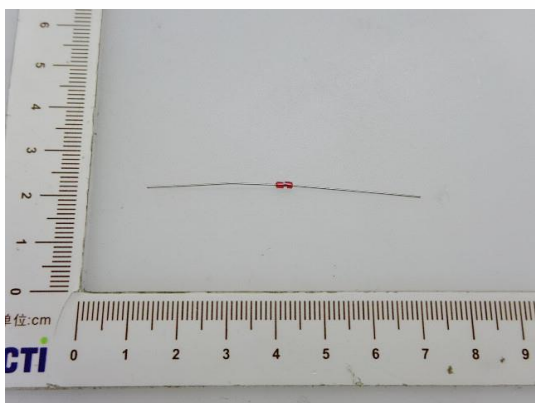
Report No. A2240413041132

Page 10 of 10

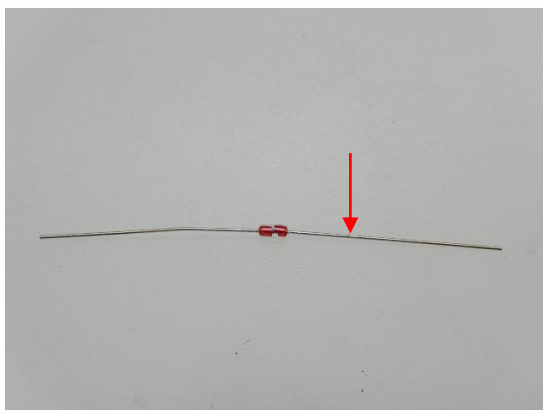
## Photo(s) of the sample(s)

Final Product

1



2



### Statement:

1. This report is considered invalid without approved signature, special seal and the seal on the perforation;
2. The Company Name shown on Report and Address, the sample(s) and sample information was/were provided by the applicant who should be responsible for the authenticity which CTI hasn't verified;
3. The result(s) shown in this report refer(s) only to the sample(s) tested;
4. Unless otherwise stated, the decision rule for conformity reporting is based on Binary Statement for Simple Acceptance Rule (w=0) stated in ILAC-G8:09/2019 / CNAS-GL015:2022;
5. Without written approval of CTI, this report can't be reproduced except in full;
6. In case of any discrepancy between the English version and Chinese version of the testing reports (if generated), the Chinese version shall prevail.

\*\*\* End of Report \*\*\*