



Test Report

Report No. A2230355012125

Page 1 of 8

Company Name DONGGUAN AILLEN ELECTRONIC TECHNOLOGY CO., LTD.
shown on Report
Address NO.28, JINGGANG ZHONG ROAD, SHATIAN TOWN, DONGGUAN CITY,
GUANGDONG PROVINCE, P. R. CHINA

The following sample(s) and sample information was/were submitted and identified by/on the behalf of the applicant

Sample Name MLCC-NPO/MLCC-NP0-AT&Soft
Sample Received Date Jul. 20, 2023
Testing Period Jul. 20, 2023 to Aug. 7, 2023

Test Requested As specified by client, to test Lead (Pb), Cadmium (Cd), Mercury (Hg), Hexavalent Chromium (Cr(VI)), Polybrominated Biphenyls (PBBs), Polybrominated Diphenyl Ethers (PBDEs), Phthalates (DBP, BBP, DEHP, DIBP) in the submitted sample(s).

Test Method/Test Result(s) Please refer to the following page(s).



Approved by

Hill Zheng

Date

Aug. 7, 2023

Hill Zheng
Technical Manager

No. R450141216

Centre Testing International Group Co.,Ltd.

CTI Building, Xing Dong Community, Xin'an Sub-district, Bao'an District, Shenzhen City, Guangdong Province, P.R. China

Test Report

Report No. A2230355012125

Page 2 of 8

Conclusion

<u>Tested Sample</u>	<u>According to standard/directive</u>	<u>Result</u>
Submitted Sample	RoHS Directive 2011/65/EU with amendment (EU) 2015/863	PASS

PASS means that the results shown on the report comply with the limits set by RoHS Directive 2011/65/EU with amendment (EU) 2015/863.



Test Report

Report No. A2230355012125

Page 3 of 8

Test Method

Tested Item(s)	Test Method	Measured Equipment(s)
Lead (Pb)	IEC 62321-5:2013	ICP-OES
Cadmium (Cd)	IEC 62321-5:2013	ICP-OES
Mercury (Hg)	IEC 62321-4:2013+AMD1:2017 CSV	ICP-OES
Hexavalent Chromium (Cr(VI))	IEC 62321-7-2:2017 and/or determination of Total Chromium by IEC 62321-5:2013	UV-Vis/ICP-OES
Polybrominated Biphenyls (PBBs)	IEC 62321-6:2015	GC-MS
Polybrominated Diphenyl Ethers (PBDEs)	IEC 62321-6:2015	GC-MS
Phthalates (DBP, BBP, DEHP, DIBP)	IEC 62321-8:2017	GC-MS

Test Report

Report No. A2230355012125

Page 4 of 8

Test Result(s)

Tested Item(s)	Result		MDL	Limit
	1.1	2.1		
Lead (Pb)	N.D.	N.D.	2 mg/kg	1000 mg/kg
Cadmium (Cd)	N.D.	N.D.	2 mg/kg	100 mg/kg
Mercury (Hg)	N.D.	N.D.	2 mg/kg	1000 mg/kg
Hexavalent Chromium (Cr(VI))	N.D.	N.D.	8 mg/kg	1000 mg/kg

Tested Item(s)	Result		MDL	Limit
	1.1	2.1		
Polybrominated Biphenyls (PBBs)				
Monobromobiphenyl	N.D.	N.D.	5 mg/kg	1000 mg/kg
Dibromobiphenyl	N.D.	N.D.	5 mg/kg	
Tribromobiphenyl	N.D.	N.D.	5 mg/kg	
Tetrabromobiphenyl	N.D.	N.D.	5 mg/kg	
Pentabromobiphenyl	N.D.	N.D.	5 mg/kg	
Hexabromobiphenyl	N.D.	N.D.	5 mg/kg	
Heptabromobiphenyl	N.D.	N.D.	5 mg/kg	
Octabromobiphenyl	N.D.	N.D.	5 mg/kg	
Nonabromobiphenyl	N.D.	N.D.	5 mg/kg	
Decabromobiphenyl	N.D.	N.D.	5 mg/kg	

Tested Item(s)	Result		MDL	Limit
	1.1	2.1		
Polybrominated Diphenyl Ethers (PBDEs)				
Monobromodiphenyl ether	N.D.	N.D.	5 mg/kg	1000 mg/kg
Dibromodiphenyl ether	N.D.	N.D.	5 mg/kg	
Tribromodiphenyl ether	N.D.	N.D.	5 mg/kg	
Tetrabromodiphenyl ether	N.D.	N.D.	5 mg/kg	
Pentabromodiphenyl ether	N.D.	N.D.	5 mg/kg	
Hexabromodiphenyl ether	N.D.	N.D.	5 mg/kg	
Heptabromodiphenyl ether	N.D.	N.D.	5 mg/kg	
Octabromodiphenyl ether	N.D.	N.D.	5 mg/kg	
Nonabromodiphenyl ether	N.D.	N.D.	5 mg/kg	
Decabromodiphenyl ether	N.D.	N.D.	5 mg/kg	

Test Report

Report No. A2230355012125

Page 5 of 8

Tested Item(s)	Result		MDL	Limit
	1.1	2.1		
Phthalates (DBP, BBP, DEHP, DIBP)				
Dibutyl phthalate (DBP) CAS#:84-74-2	N.D.	N.D.	50 mg/kg	1000 mg/kg
Butyl benzyl phthalate (BBP) CAS#:85-68-7	N.D.	N.D.	50 mg/kg	1000 mg/kg
Di-(2-ethylhexyl) phthalate (DEHP) CAS#:117-81-7	N.D.	N.D.	50 mg/kg	1000 mg/kg
Diisobutyl phthalate (DIBP) CAS#:84-69-5	N.D.	N.D.	50 mg/kg	1000 mg/kg

Sample/Part Description

No.	CTI Sample ID	Description
1	1.1	Gray capacitance(Tested as a whole)
2	2.1	Gray capacitance(Tested as a whole)

- Remark:**
- The sample(s) had been dissolved totally tested for Lead, Cadmium, Mercury.
 - The sample(s) was tested as a whole, because it's impossible to disassemble or separate it by current equipment and technology. The result(s) shown on this report may be different from the content of any homogeneous material.
 - MDL = Method Detection Limit
 - N.D. = Not Detected (<MDL)
 - mg/kg = ppm = parts per million
 - 1000 mg/kg = 0.1%

CTI 华测检测

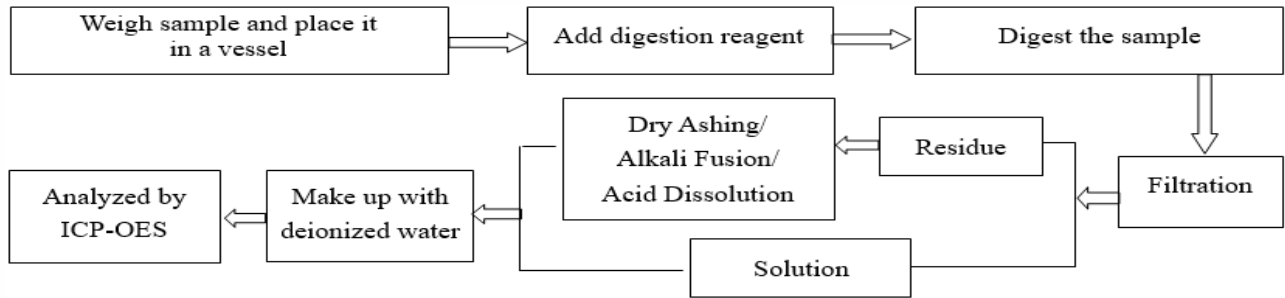
Test Report

Report No. A2230355012125

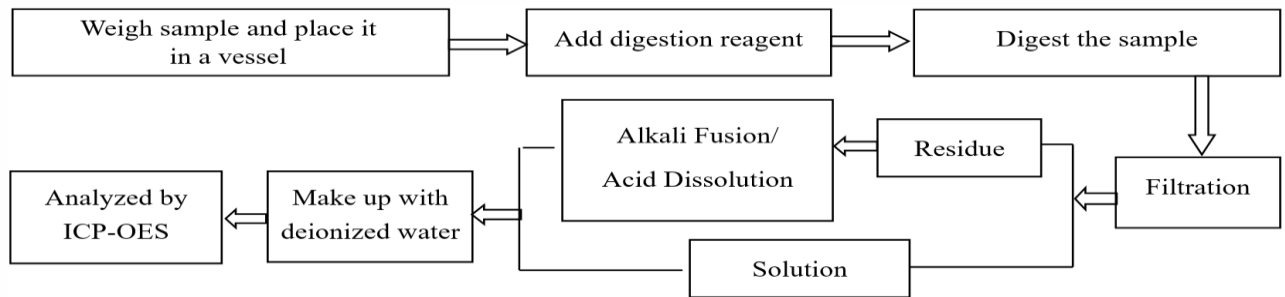
Page 6 of 8

Test Process

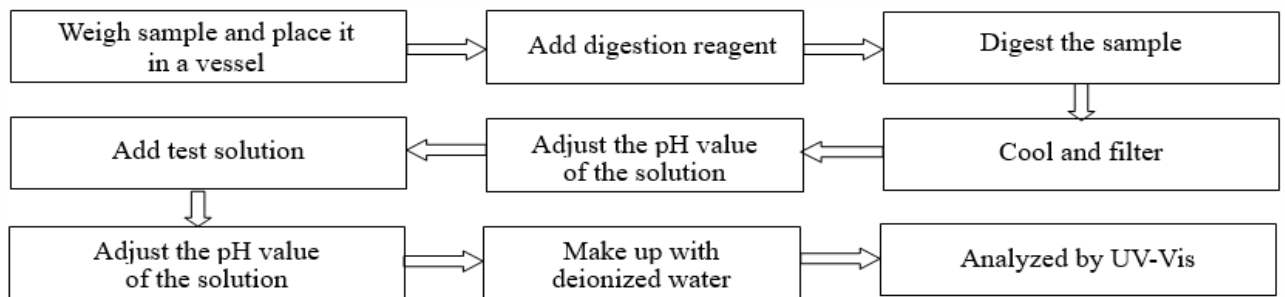
1. Lead (Pb), Cadmium (Cd), Chromium(Cr)



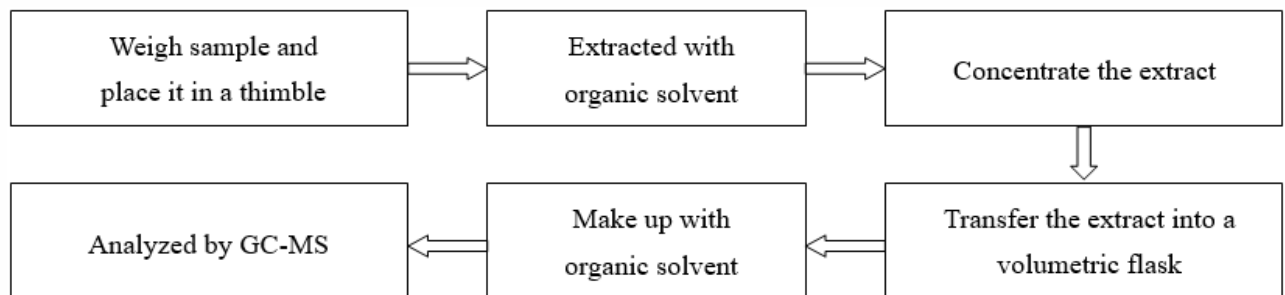
2. Mercury (Hg)



3. Hexavalent Chromium (Cr(VI))



4. Polybrominated Biphenyls (PBBs), Polybrominated Diphenyl Ethers (PBDEs)

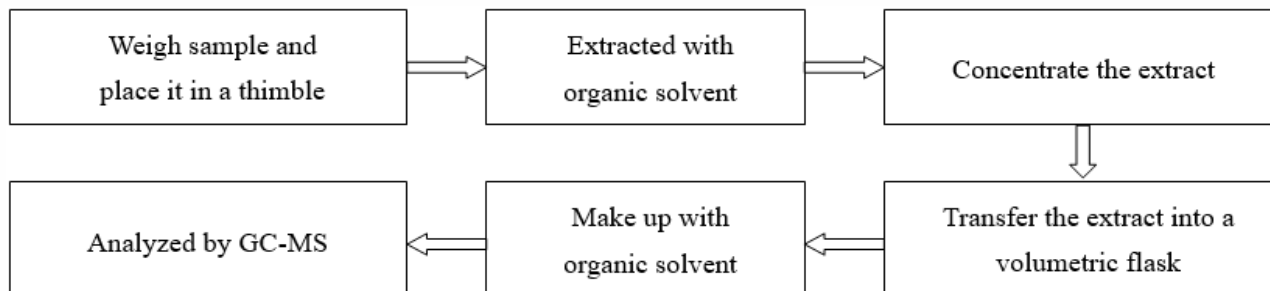


Test Report

Report No. A2230355012125

Page 7 of 8

5. Phthalates (DBP, BBP, DEHP, DIBP)



CTI 华测检测

Test Report

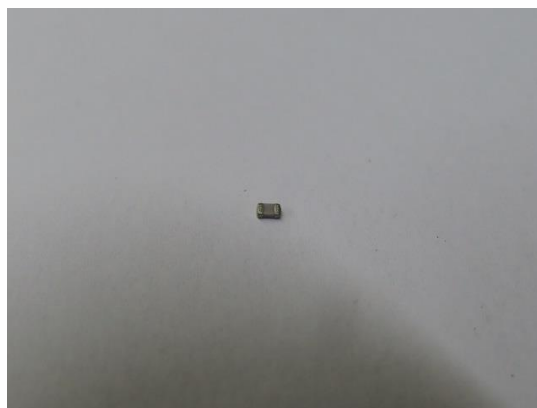
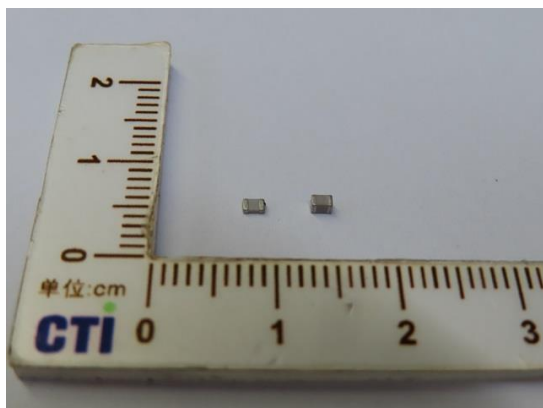
Report No. A2230355012125

Page 8 of 8

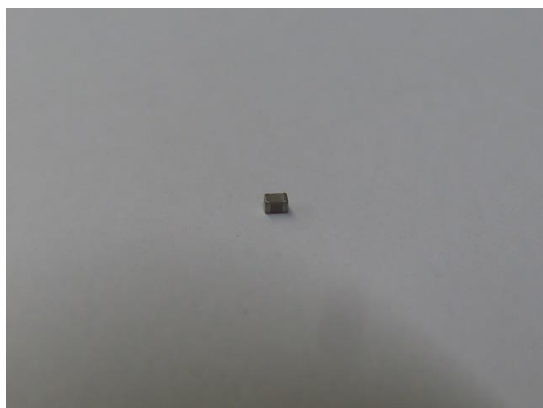
Photo(s) of the sample(s)

Final Product

1.1



2.1



Statement:

1. This report is considered invalid without approved signature, special seal and the seal on the perforation;
2. The Company Name shown on Report and Address, the sample(s) and sample information was/were provided by the applicant who should be responsible for the authenticity which CTI hasn't verified;
3. The result(s) shown in this report refer(s) only to the sample(s) tested;
4. Without written approval of CTI, this report can't be reproduced except in full;
5. In case of any discrepancy between the English version and Chinese version of the testing reports (if generated), the Chinese version shall prevail.

*** End of Report ***